

Inspection by the Invasive Species Program

Division of Ecological Resources
Minnesota Department of Natural Resources

Lake: Ida

DOW Number: 21-0123

Date of inspection: 6-10-09

County: Douglas

Observer[s]: N. Olson & W. Pilipauskas

Time - On Water: 1000

Off water: 1330

Type of inspection: Review of possible increase in curly-leaf pondweed abundance

Author[s] of report: N. Olson

Date of report: 6-15-09

Overall: Wes Smith of the Ida Lake Association contacted Nathan Olson, Invasive Species Specialist, Fergus Falls, about the possible increase of curly-leaf pondweed *Potamogeton crispus* in the northwest bay of Lake Ida, Douglas County. The inspection consisted of an evaluation of the northwest bay and other areas of the lake (Figure 1). Wes was present in the boat for the inspection of the northwest bay, and contact with Rob Auel, lake association president, was also made. In the northwest bay, only one area had a stand of curly-leaf, with only a few other plants present. In many cases, clasping-leaf pondweed *P. richardsonii* was incorrectly identified as curly-leaf pondweed. Other species of plants observed included chara *Chara* spp., coontail *Ceratophyllum demersum*, Illinois pondweed *P. illinoensis*, flatstem pondweed *P. zosteriformes*, elodea *Elodea Canadensis*, and yellow water lily *Nuphar variegata*. Due to the small area occupied by curly-leaf pondweed, recommendations were to continue with mechanical removal.

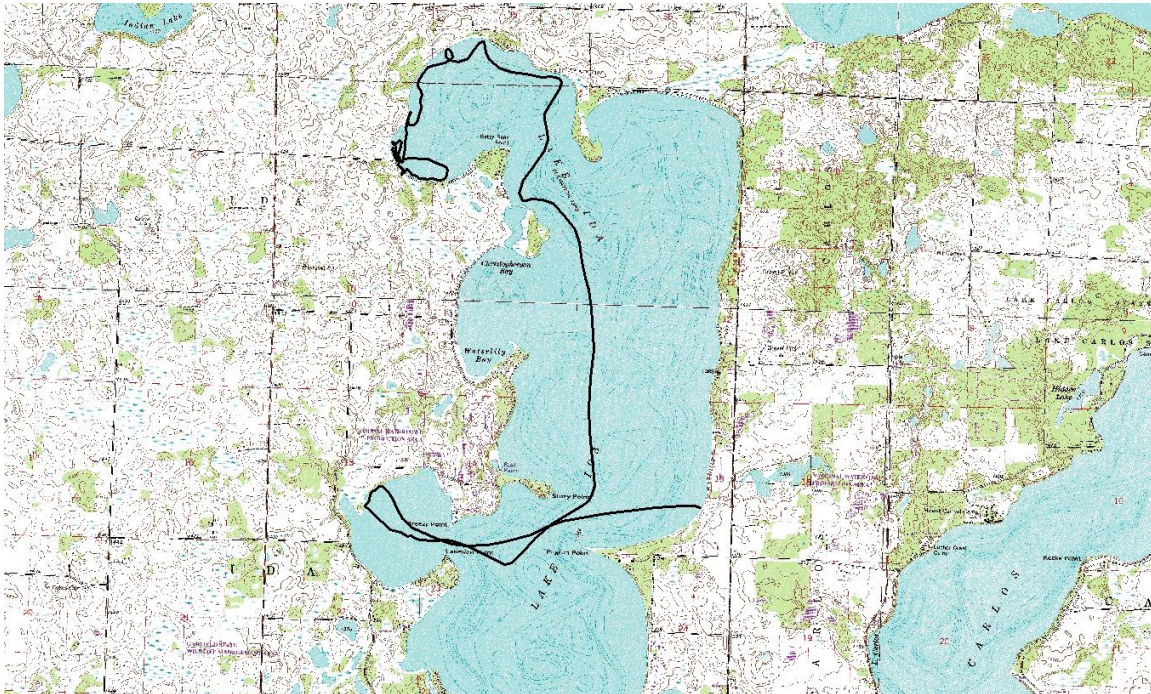


Figure 1. Track of the boat where areas were investigated for curly-leaf pondweed on Lake Ida, Douglas County, June 10, 2009.

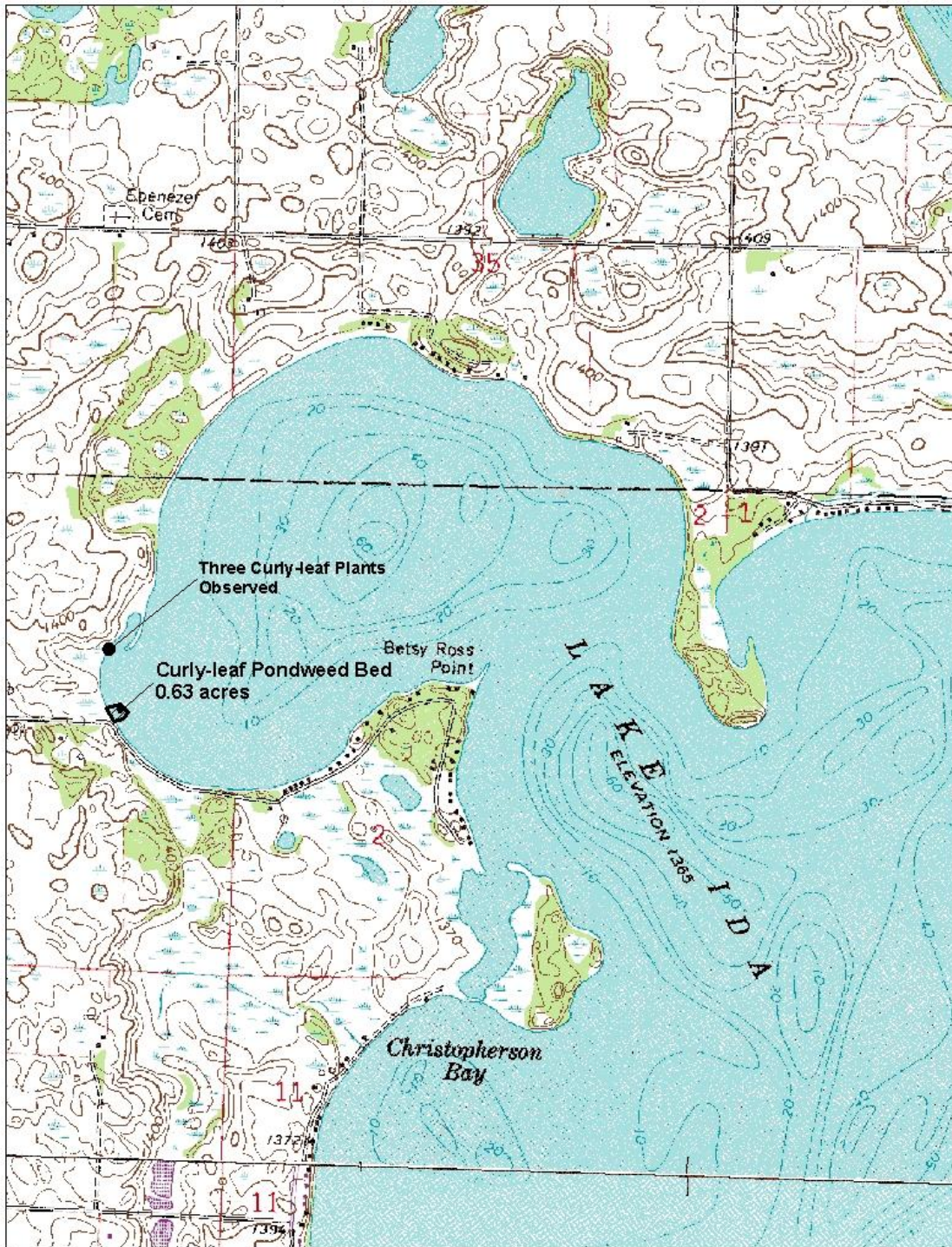


Figure 2. Location of curly-leaf pondweed in the northwest bay of Lake Ida, Douglas County, June 10, 2009.



Figure 3. A sample of the aquatic plants observed at many of the Lake Ida sites investigated on June 10, 2009.



Figure 4. Comparison of curly-leaf pondweed (left) versus claspingleaf pondweed (right).

Additional information

GPS Yes:
 No: