

2022 Spring Curlyleaf Pondweed Delineation

Lake Ida (# 21-0123-00)

Douglas County, MN

Surveyed May 26-27, 2022



Survey, Analysis, and Reporting by:

James A. Johnson – *Aquatic Ecologist, Freshwater Scientific Services, LLC*



Certified Lake Manager
www.NALMS.org

Purpose of Survey

This spring survey was designed to locate and delineate areas of curlyleaf pondweed (CLP) in designated portions of Lake Ida (#21-0123). This information will help to guide CLP management in the lake and is required as a part of the DNR permitting process.

Survey Method

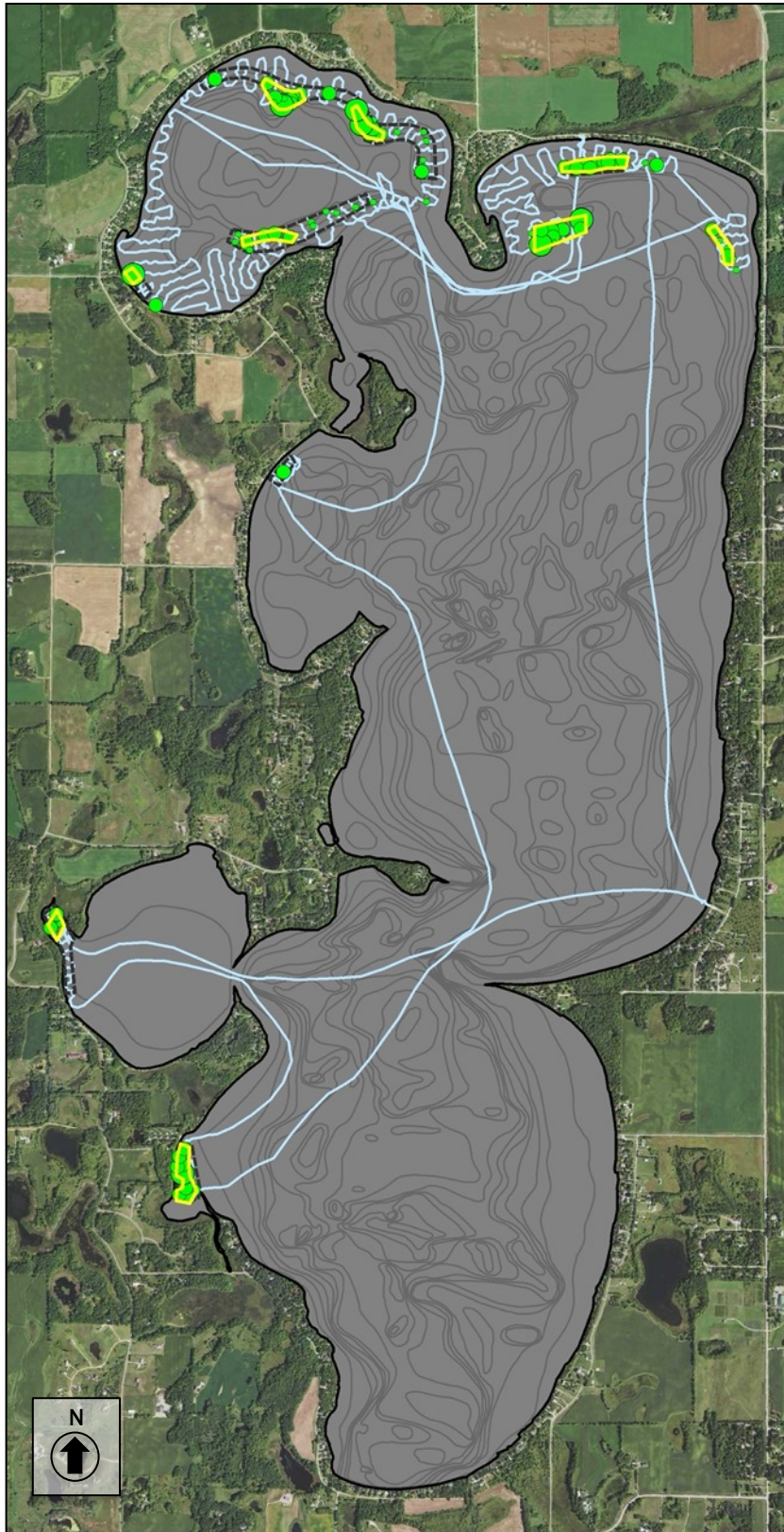
CLP Delineation Survey

Freshwater Scientific Services surveyed designated portions of Lake Ida on May 26-27, 2022. During this survey, we navigated a meandering path over the designated areas while using a combination of rake tosses, sonar readings, and surface observations to locate and delineate areas of CLP growth. For each rake sample, we dragged a double-sided rake over approximately 10 square feet of lake bottom and inspected the retrieved plants. When we encountered CLP, we marked the location, recorded the water depth, and rated the density of the CLP growth using rake density scores as described in the table below. The recorded water depths and density scores were linked to the appropriate GPS locations and then mapped using desktop GIS software.

Score	Visual	Rake
1	Light / Solitary plants	1-2 stems
2	Moderate / Scattered dense patches	3 to 9 stems
3	Dense / Uniform dense growth	10+ stems


Lake Ida (#21-0123)

Curlyleaf Pondweed Delineation: 2022






Curlyleaf Pondweed

 2021 Plots

 2022 Search Path

 Proposed 2022 Plots

2022 CLP Density

-  1
-  2
-  3

Surveyed: May 26-27, 2022

Methods: Rake, Sonar, Visual

Surveyor: JA Johnson



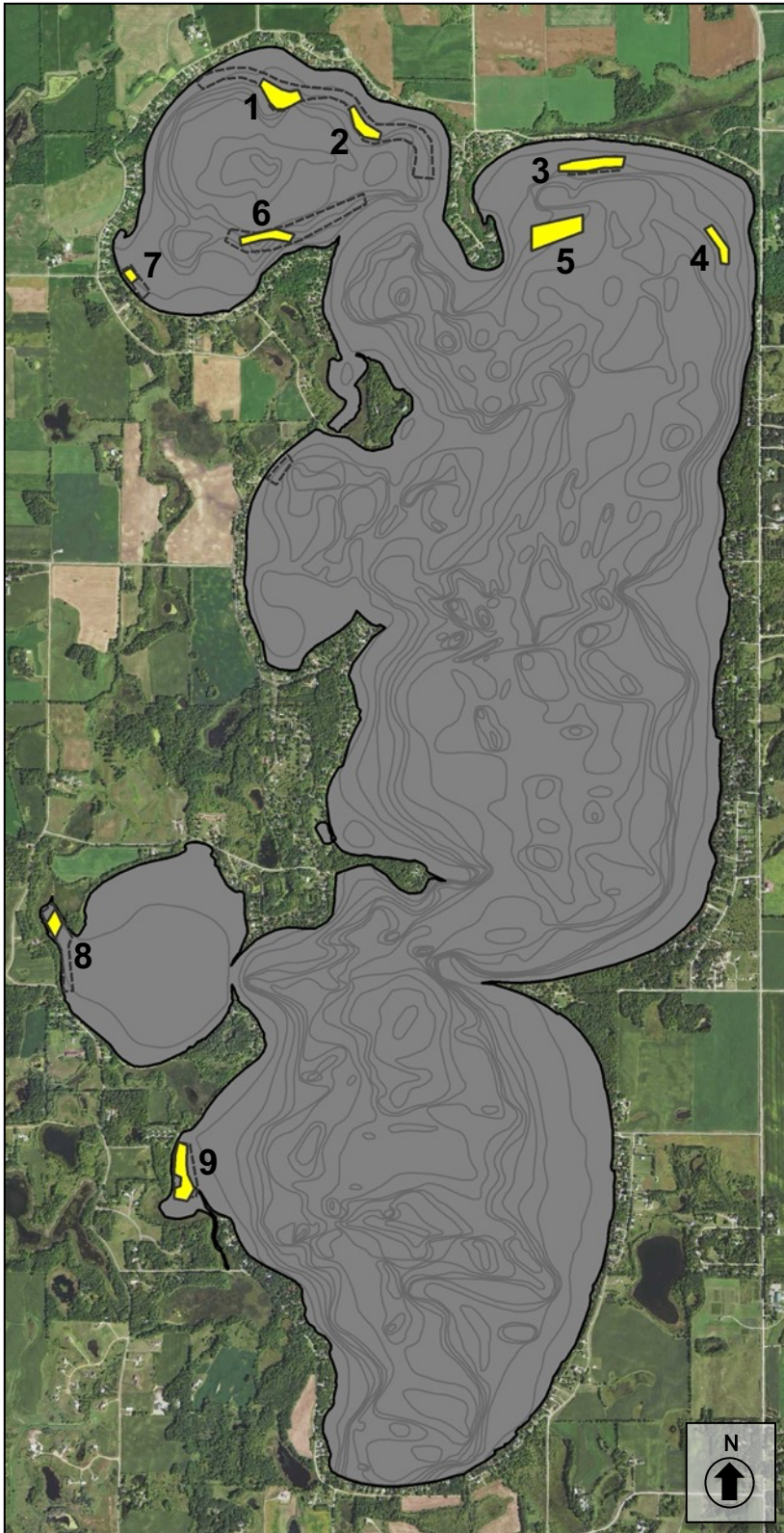
Certified Lake Manager
www.NALMS.org



15771 Creekside Lane
Osseo, MN 55369
fixmylake.com
(651) 336-8696

Lake Ida (#21-0123)

Curlyleaf Pondweed Management Plots: 2022



Proposed Management Plots

Proposed 2022 Plots

Plot	Acres	Mean Depth (ft)	Mean CLP (1-3)
1	5.3	14.8	1.8
2	3.3	14.1	2.2
3	5.5	13.0	1.9
4	2.9	15.2	1.5
5	8.2	16.8	2.1
6	3.5	15.3	1.7
7	1.0	5.2	3.0
8	1.9	3.1	1.5
9	5.6	4.5	2.1

Total 37.2 acres

Note: The long cold spring of 2022 delayed CLP sprouting and growth; most of the CLP plants we found were less than 6" tall. Although CLP was generally widespread in the same areas as found in previous years, the density was often very low (single plants retrieved on the rake).

We have drawn recommended plots based upon 2022 densities, but the DNR may allow expansion of some plots to incorporate areas treated in 2021. The lake group should discuss this with their DNR AIS Specialist.

Much of the denser CLP that we found was in deep water (12-16 ft). CLP growth in these areas will not likely impair boating, so treating these deep areas may not be worth the cost.

Surveyed: May 26-27, 2022

Methods: Rake, Sonar, Visual

Surveyor: JA Johnson



Certified Lake Manager
www.NALMS.org



15771 Creekside Lane
Osseo, MN 55369
fixmylake.com
(651) 336-8696

Online Resources & Contacts

Minnesota Administrative Rules for Aquatic Plant Management

<https://www.revisor.mn.gov/rules/?id=6280>

Minnesota DNR – Aquatic Plant Management Regulations & Permit Application Forms

<http://www.dnr.state.mn.us/apm/index.html>

Mark Ranweiler

Invasive Species Specialist

Minnesota DNR

mark.ranweiler@state.mn.us

(218) 671-7945

Wendy Crowell

ALS Management Coordinator

Minnesota DNR

wendy.crowell@state.mn.us

(651) 259-5085