



Curlyleaf Pondweed (CLP) Delineation Report

Ida Lake (Douglas County)

DNR Lake ID #: 21012300

Survey Date: 5/11/2021

Survey & Report Completed by: Eric Fieldseth, AIS Consulting Services

Survey Purpose & Methods

This survey was designed to determine the distribution and abundance of Curlyleaf Pondweed in Ida Lake throughout the littoral area of the designated search areas shown in Figure 1. Data from this survey will be used to help inform CLP management plans for 2021.

AIS Consulting Services completed a Curlyleaf Pondweed delineation on Ida Lake on May 11, 2021 (Figure 2.). We maneuvered our boat in a meandering pattern throughout the littoral area of the lake, and used a combination of rake tosses, visual observation and our sonar unit to identify areas of CLP. When CLP was observed, we recorded a waypoint, assigned an estimated density score for the CLP, and recorded water depth.

Early season CLP estimated density rating scale

Estimated Density Rating	Description	Rake Sample
1	Low Density - scattered plants	1 to 2 stems
2	Moderate Density - plants are common	3 to 9 stems
3	High Density—heavy growth, dense stands of plants	10 + stems

Figure 1. Ida Lake 2021 CLP Search Areas

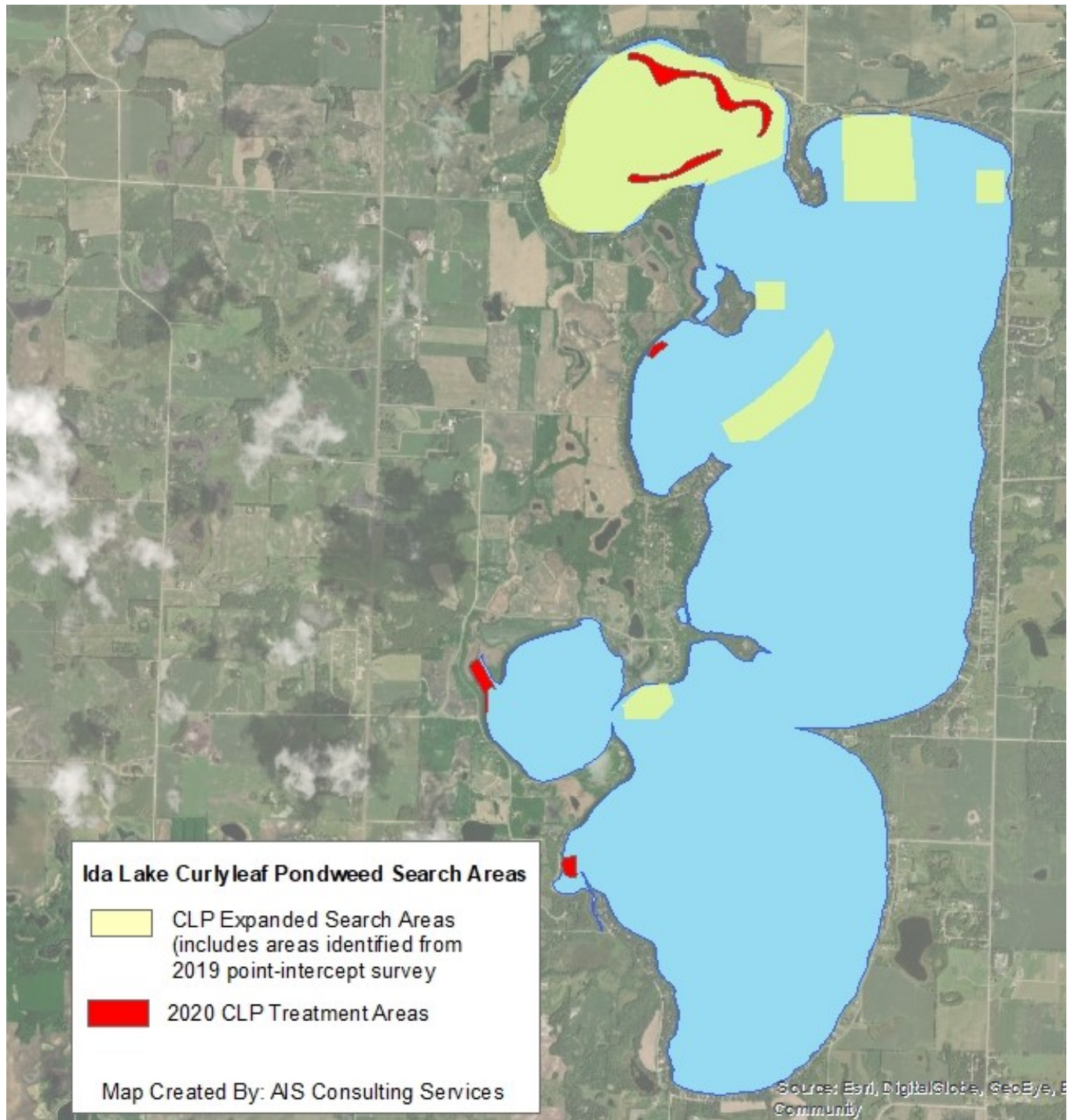


Figure 2. Survey tracks from Ida Lake CLP delineation on May 11, 2021

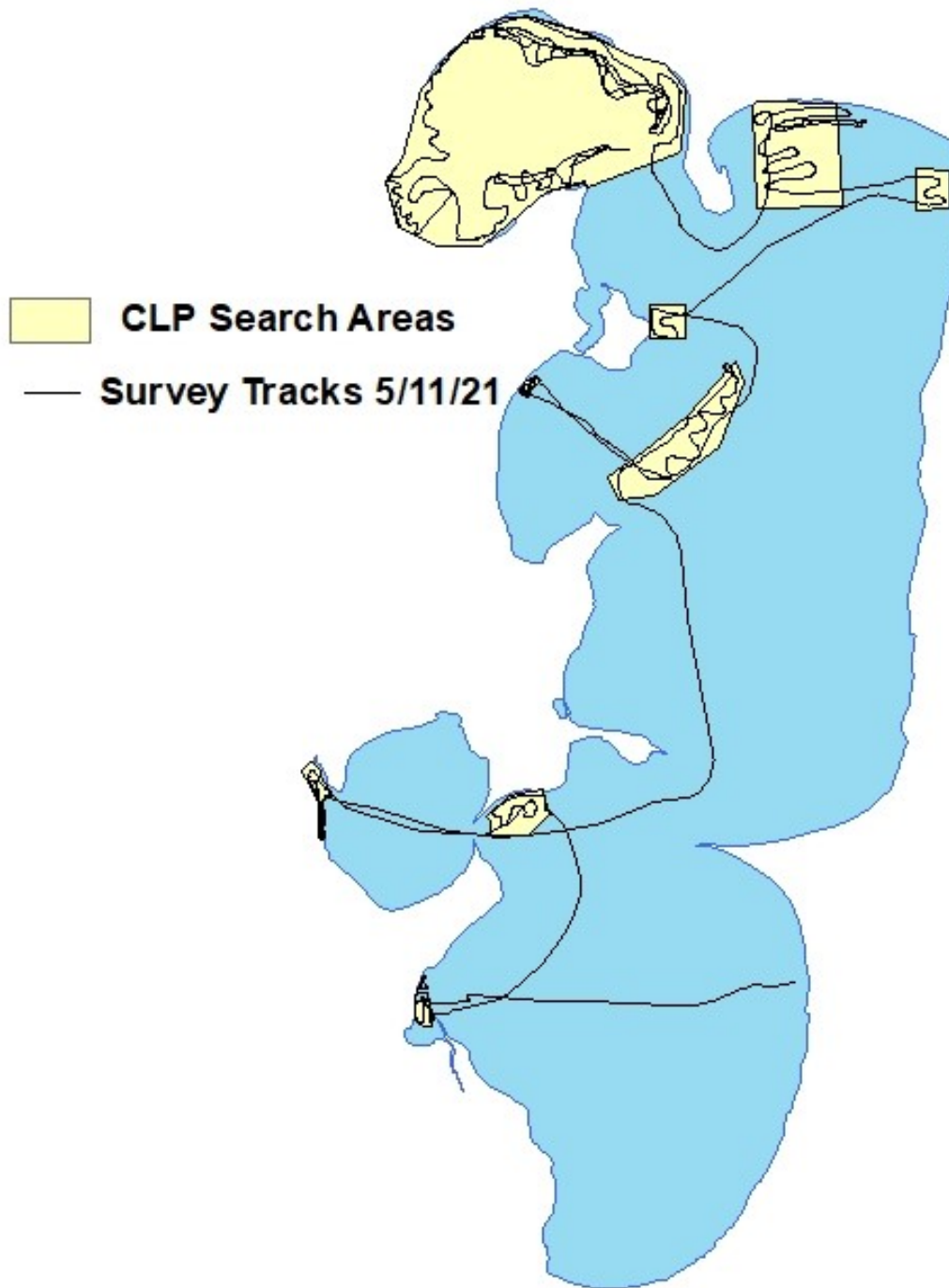


Figure 3. CLP distribution and abundance from Ida Lake CLP delineation May 11, 2021

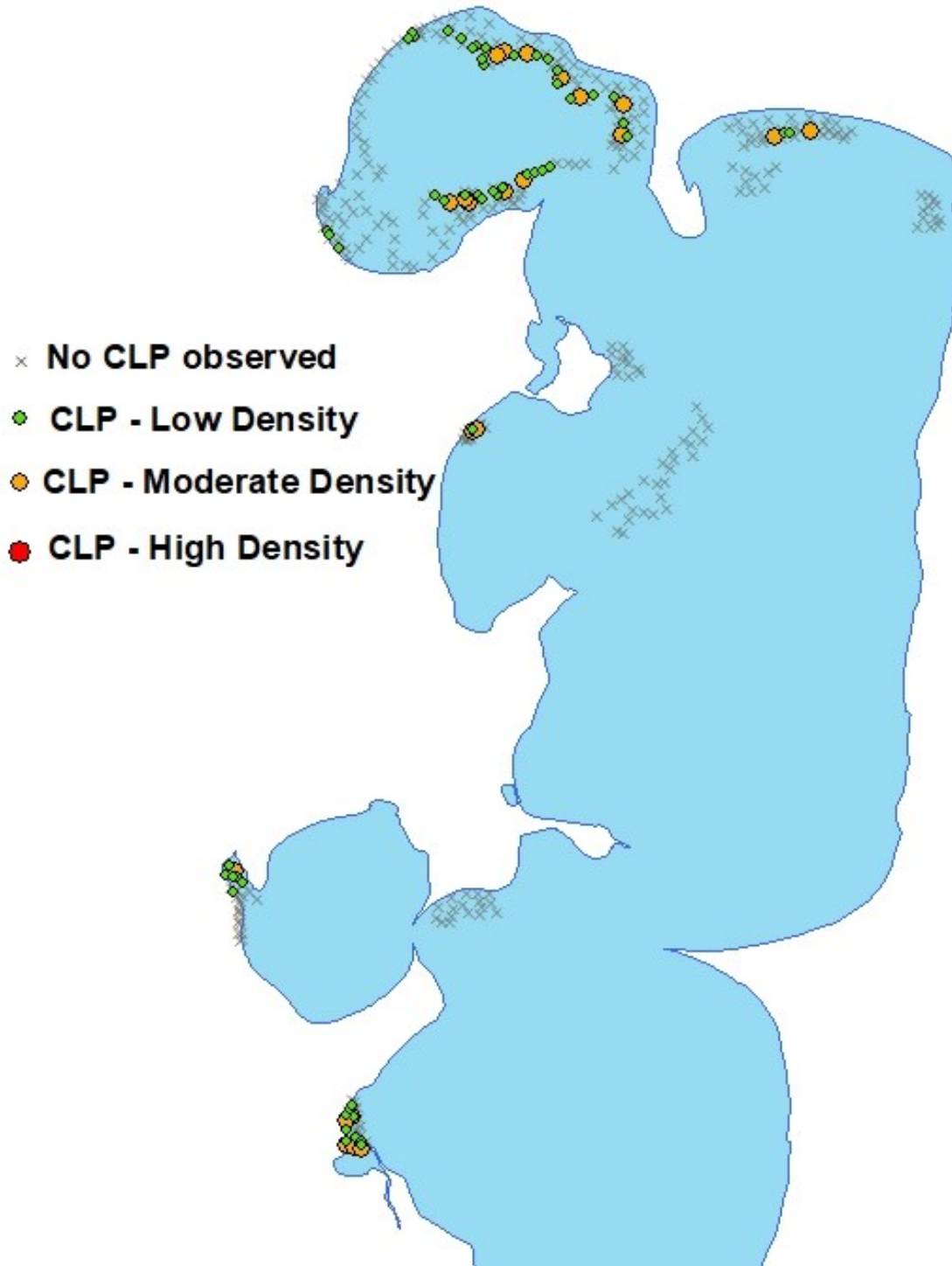


Figure 4. CLP distribution and abundance from Ida Lake CLP delineation May 11, 2021 (zoomed in)

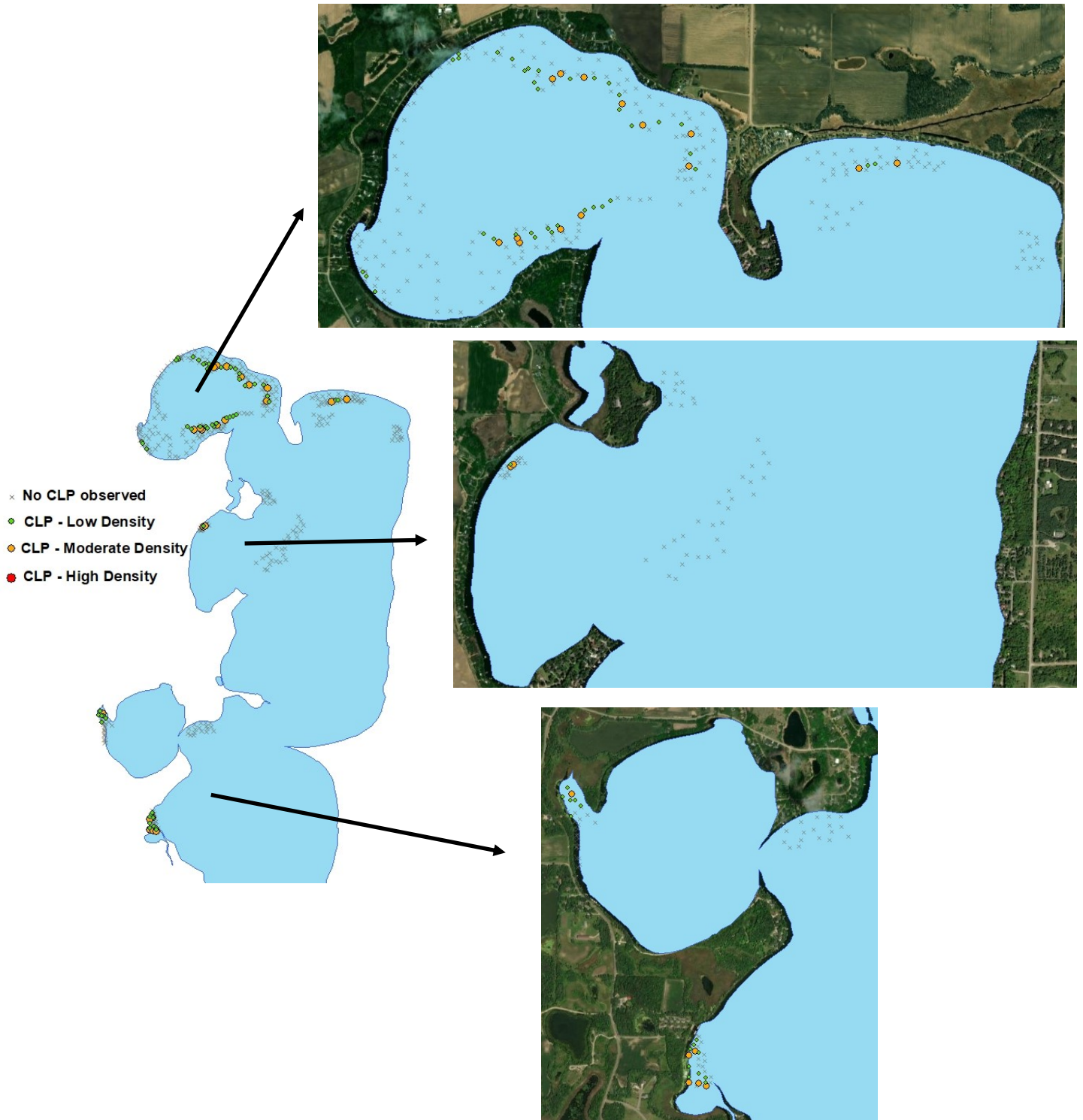


Figure 5. Ida Lake 2021 Potential CLP Treatment Areas (58.24 acres)

